

**PNEUMATECH<sup>®</sup> INC.**

# HEATLESS REGENERATIVE DRYERS

## *PHM Mini-Series*

### DESIGNED

*for economical, trouble-free  
performance and long-life reliability*



### MANUFACTURED

*with high-quality components  
and innovative engineering*

### SUPPORTED

*by a world-wide distribution  
network of compressed air  
management consultants*

## **INDUSTRY APPLICATIONS:**

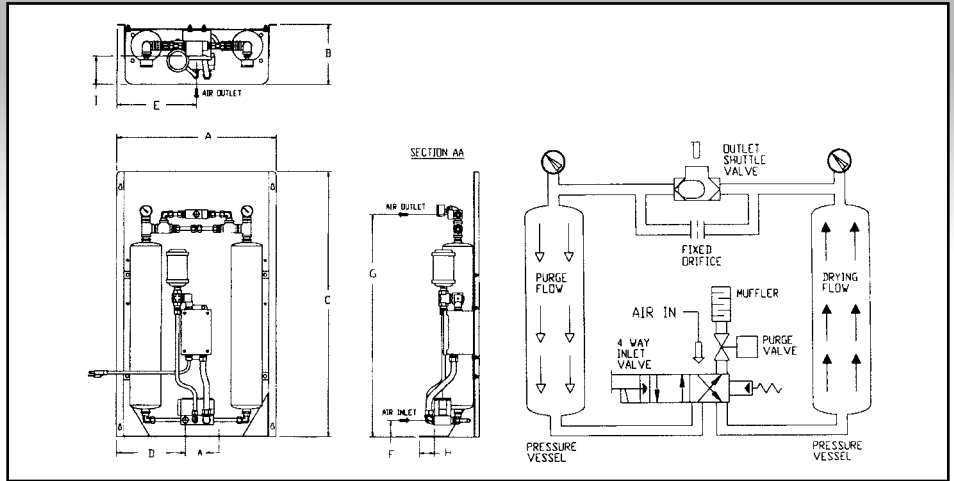
- Pneumatic Instruments and Control Systems
- Food, Drug and Chemical Industries
- Plastic Molding
- Synthetic Fiber Processing
- Fluidics and Logic Systems
- Ferrous and Nonferrous Metal Formation
- Paint Spray Systems
- Outdoor Air-Operated Systems
- All Point-of-Use Regenerative Dryer Applications
- Medical and Dental Equipment
- Pressurizing Telephone and Video Cables
- Ozone Generation
- Fluidizing Solids

**WORLD LEADERS IN COMPRESSED AIR SYSTEM ENGINEERING**

## BENEFITS:

- Longer tool, instrument and control life
- Eliminates blockage, corrosion and circuit freeze-ups
- Dries and purifies air and gas
- Drier air than refrigeration dryers
- Instant dry air; no waiting; no warm-up
- Long desiccant life and minimal maintenance

## SPECIFICATIONS:



MODEL*	A	B	C	D	E	F	G	H	I	INLET/OUTLET	DESICCANT (lbs.)	APPROX. SHIPPING WT. (lbs.)
PHM-5	16"	6.25"	23"	8"	8"	1"	21"	-	-	.25" NPT	6	110
PHM-10	22"	8.25"	36.5"	9.5"	11"	2.25"	32.5"	1.75"	3.75"	.5" NPT	18	140
PHM-15	22"	8.25"	36.5"	9.5"	11"	2.25"	27.5"	1.5"	3.375"	.5" NPT	18	155
PHM-25	22"	8.25"	36.5"	9.5"	11"	3.75"	27"	1"	.875"	.5" NPT	28	165
PHM-35	22"	8.25"	36.5"	9.5"	11"	3.5"	28.5"	.625"	.375"	.5" NPT	40	185
PHM-50	22"	8.25"	36.5"	9.5"	11"	2.25"	33.625"	.625"	.375"	.5" NPT	56	200

\* Model number indicates maximum flow based on inlet condition of 100 PSIG and 120° F maximum inlet temperature.

## FEATURES:

- -40° F pressure dew point
- Pressure drop 3 PSID or less
- Five- or ten-minute NEMA cycles
- UL, cUL listed
- Compact design
- Wall or base mountable
- NEMA 4 enclosure
- Highly reliable and durable components
- Easy to remove and replace desiccant
- Tower pressure gauges
- Fixed purge orifice
- Adjustable purge optional
- Exhaust muffler
- Solenoid operated inlet and purge valves
- All pneumatic sequence operation option available (no electrical)

## ELECTRICAL COMPONENTS:

- Standard electrical — 115 - 1 - 60
- Optional electrical — 230 - 1 - 60
- Solid state timer
- Fuse Block
- Fuse - 1 AMP (located inside electrical enclosure)
- Six-foot power cord

NOTE: Design pressure 150 PSIG max.; operating temperature 120° F max., 70° F min.

## RECOMMENDED INSTALLATION:

Oil will contaminate the adsorbent material, making it ineffective for water vapor removal. A Pneumatech oil coalescing pre-filter must be installed with the dryer. A Pneumatech particulate after-filter also is required for proper particulate and desiccant dust removal.

Pneumatech's ongoing investment in research and development results in continuous product improvements. Changes in specifications or product designs in connection with any product feature do not entitle the purchaser to corresponding changes, improvements, additions or replacements for equipment previously sold or shipped.

Distributed by:

  
**and ConservAIR® Technologies Co. LLP**  
 4909 70th Avenue • Kenosha, Wisconsin U.S.A. 53144  
 (262) 658-4300 Fax: (262) 658-1945 • Website: <http://www.pneumatech.com>



Use of this Motor Challenge logo does not imply DOE endorsement.